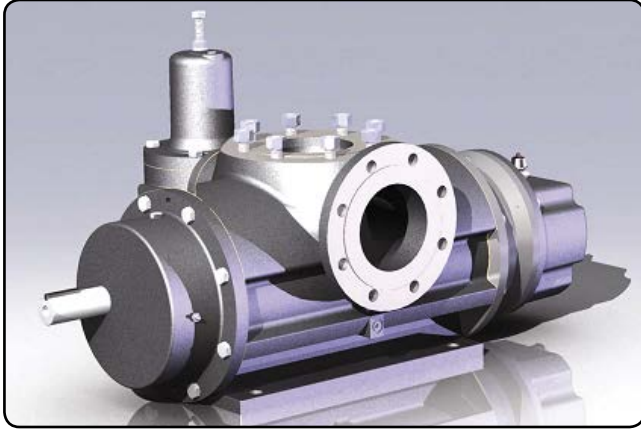




Manufacturers of Rotary Gear Twin Screw & Lobe Pumps



A POSITIVE PUMP SOLUTION

Albany is a leading manufacturer of standard & special purpose pumps for a very wide range of fluids. By means of the companies that have been incorporated into the Albany Group over 400 years of experience in pumping technology is at the service of its customers.

Albany can meet the special needs of plant engineers, OEM's and users quickly and efficiently. A flexible engineering approach is backed by an exhaustive applications library of tried and tested solutions to most pumping problems in petrochemical, nuclear power, military, marine, lubrication and other fields.



Strict quality control is applied throughout manufacture and all pumps are tested to specification, many on computer based test rigs. Albany is an approved supplier to many countries navies and complies with API codes for the petrochemical industries. The company operates an approved Quality Assurance system to BS EN ISO 9001.

Albany own the Stothert & Pitt screw pump designs and make exact replacement pumps and spares in their UK factory along with a new range of standard twin-screw pumps.

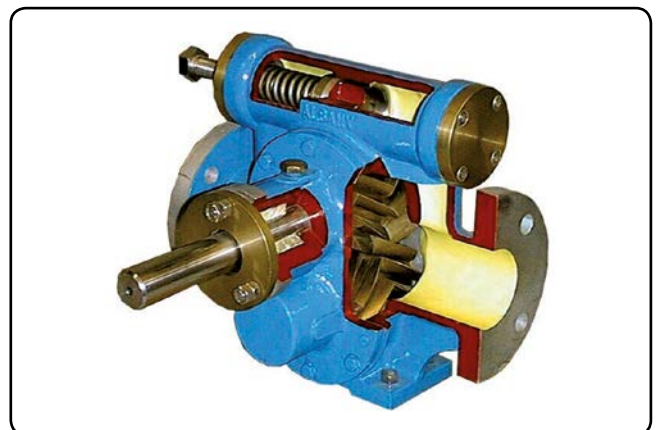
MASTERY IN GEAR PUMP & SCREW PUMP TECHNOLOGY

ALBANY PRODUCES:

Rotary Gear Pumps with capacities to 120 m³/hr (2000 l/m); pressures up to 40 bar; temperatures to 320°C; viscosities to 250,000 cst.

Available in foot & flange mounted bareshaft, bedplate mounted with various drive units and close-coupled compact versions. They can be supplied in different materials and some of the many options are thermal oil & electrical heating and incorporated relief valve.

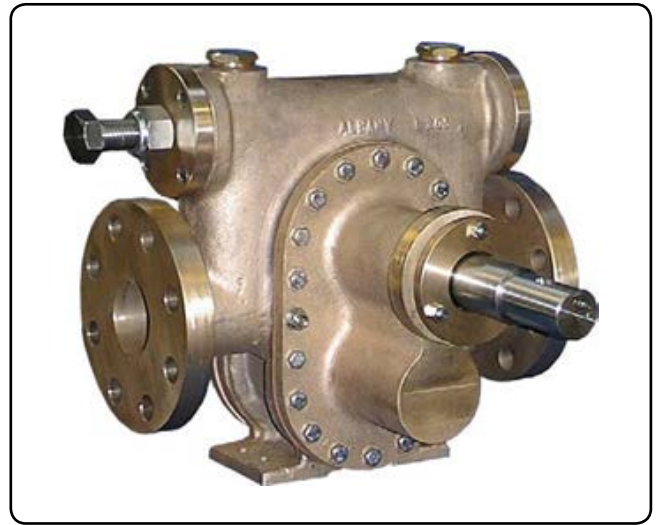
Twin-screw pumps with a capacity range of 10 to 400 m³/hr whilst 400 – 1200 m³/hr pumps are available; pressures to 50 bar; temperatures to 300°C; viscosities to 60,000 cst.



Albany screw pumps are fitted with hardened and ground timing gears and located bearings. This ensures there is no contact between the screws. The central discharge means the shafts are hydraulically balanced to eliminate any end thrust and the mechanical seals (or packed glands) are under inlet pressure.

Integral relief valves are an option along with various heating methods.

FOAM CONCENTRATE GEAR PUMP

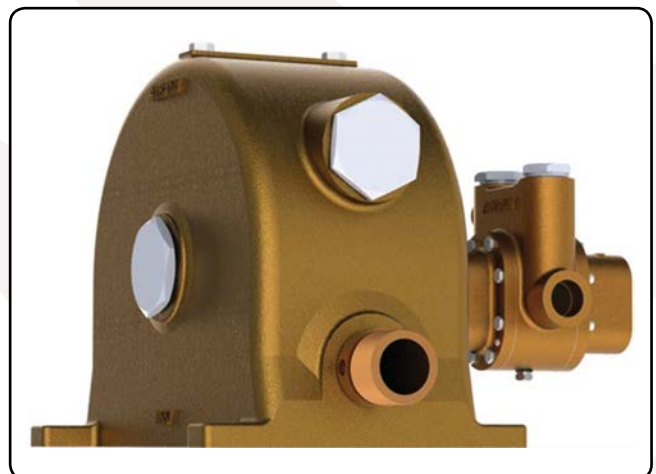
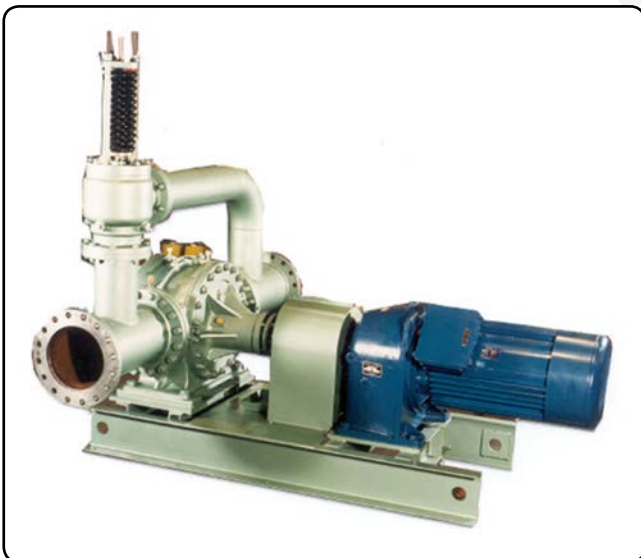


The range of foam concentrate gear pumps supply up to 1400 litres per minute of foam liquid at pressures up to 20 bar, with screw pumps available to supply up to 3000 litres per minute.

Gear pumps of sizes AP7, AP9 and HD5 can be supplied with VdS approval.

Albany foam concentrate pumps can be supplied to comply to the latest edition of NFPA20 (2013).

For additional information feel free to contact us via our website www.dawcul.com



For additional information
feel free to contact us or visit
www.dawcul.com

Dawcul Head Office
Number 8 Beech Court, Wokingham Road
Hurst, Reading, Berkshire RG10 0RQ
United Kingdom

T +44 (0)118 932 0520
F +44 (0)118 924 1919
E sales@dawcul.co.uk
W www.dawcul.com