



Dawcul and Scully Signal Company are proud to be partners, providing customers in Slovenia, Croatia, Bosnia Herzegovina, Serbia, Montenegro and Kosovo with industry-leading systems for the safe and reliable transfer and storage of hazardous liquids.

Established in 1936, Scully Signal Company is a third-generation family-owned and operated manufacturing company.

It engineers and manufactures products for the safe, dependable and efficient storage, delivery, and transport of petroleum, petro-chemicals, and other hazardous liquids.

Products

Intellitrol®2

The Scully Intellitrol®2 is the only control system that offers overfill prevention, static grounding, and vehicle identification in one, advanced system. It's made with a patented design that continuously monitors the relay contacts for loading racks. All Scully electronic products including the Intellitrol®2 incorporate Dynacheck® Dynamic Self-Checking® circuitry.

Features

- ◆ Automatic detection of two-wire optic/thermistor or five-wire optic vehicle sensors.
- ◆ Monitoring of up to 8 two-wire or 12 five-wire vehicle sensors.
- ◆ Complete visual diagnostic display of overfill sensor's status as well as vehicle static grounding conditions; will not permit loading under any fault or wet sensor condition.

Scully has over 88 years of application experience in overfill prevention, static ground proving, retained product monitoring, level alert notification, water detection, and vehicle identification and communication. Scully offers a complete line of mechanical oil delivery systems, including delivery nozzles and flow controls, tight fill connectors, tank whistles, and gauges.

- ◆ A vehicle identification module is available, which reads the truck-mounted vehicle identification T.I.M.® module and important vehicle data—loading can be prevented based on specific criteria, which the terminal determines such as insurance, certifications, and billing.
- ◆ Complete compatibility with Scully IntelliCheck® and Load Anywhere® onboard monitors.
- ◆ Easy connection to vehicles with rugged high-impact Scully plug and cable units.



Scully Signal Company

ST-35C

The ST-35C is for use with Scully 5-Wire Optic Sensors, Model SP-FU series. It can monitor up to twelve sensors in a "series" signal path. If any one of the connected sensors senses liquid, the ST-35C will respond to this "wet" condition; output relay contact opens and the red light turns on.

Although its typical application is monitoring of sensors mounted on multi-compartment vehicles, it can also be used for high level detection in storage tanks or tank farms. One relay output contact is provided, which communicates if any sensors detect liquid.

ST-35C is also used with vehicles equipped with Scully's IntelliCheck® series or Load Anywhere® Overfill Prevention Monitors. It interfaces with 5-Wire optic sockets on tank truck vehicles.

The ST-35C Control Unit has an explosion proof enclosure for mounting in locations that are classified as hazardous. For additional ground proving options, the system works in conjunction with the Scully Groundhog™ Self-Proving Earthing Verification System.

Features

- ◆ ST-35C models monitor 1 to 12 compartment vehicles.
- ◆ Signals for shut off of product flow in less than a second of detecting a potential overfill condition.
- ◆ Complete compatibility with Scully five-wire optic sensors, IntelliCheck® and Load Anywhere® onboard tank vehicle mounted overfill prevention systems.
- ◆ Will not permit loading under any fault or wet sensor condition.

ST-47C Groundhog™

Don't let unsure earthing / bonding methods leave you guessing. Transport vehicles should be properly tied to earth before and during the loading operation. The Scully Groundhog™ gives you complete assurance that a proper static earth tie-in is present with its self-proving earthing system for maximum safety in loading operations.



The system consists of a rack-mounted control housing with two connection methods. It can operate in conjunction with your existing Scully Overfill Prevention System (Intellitrol®, ST-35, ST-15, and ST-15-WX) or as an independent unit.

Features

- ◆ It can be used with a variety of loading operations including tank trucks, rail tank cars, aircraft refuelers, and tanks to ensure that transport vehicles are properly tied to earth before and during the loading operation.
- ◆ The system continuously monitors the ground connection and once the connection is lost, the ST-47 will non-permit.
- ◆ Direct earthing tie-in point at loading rack is available.

Plugs & Cables

Scully plugs are made of heavy-duty moulded polyurethane with stainless steel contacts. The fuel resistant cables are available in 9 meters coiled or 6 meters straight with optional quick release connectors.

They are designed for use only with the Intrinsically Safe output circuits of Scully loading rack control monitors. The control unit/sensor signals pathway monitor the status of overfill prevention, electrostatic earthing and vehicle identification during loading operations.

The poly plug storage bracket provides safe storage of the poly plug whilst not in use.



Features

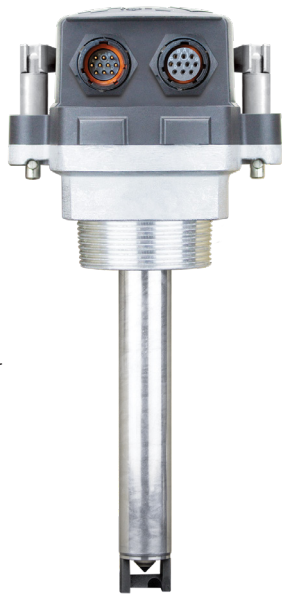
- ◆ Designed for use with the intrinsically safe output circuits of Scully's Intellitrol®, ST-35, or ST-15 Terminal Control Monitors.
- ◆ Used to connect the Scully loading rack monitor to the vehicle mounted socket.
- ◆ Rugged, petroleum-resistant design to withstand harsh environments and mishandling.
- ◆ Permanent socket locator pins that won't loosen or back out.
- ◆ Internal cable retention clamp to prevent cable pull-out or twisting.

Scully Signal Company

Scully Connect®

The Scully Connect® Plus Sensor is an advanced tool-less overfill prevention sensor that allows for quick, easy, and error-free installation of your overfill prevention system. It saves hours of installation time, prevents miswiring of the system, and allows for trouble-free connections. The patented sensor and cabling system is designed for reliable operation and maximum safety.

The sensor features a connector for simple sensor installation and replacement, and the new sensor levers allow for tool-less sensor access in tight spaces. The exterior cable connectors on the cap feature marine-grade watertight fittings. Finally, the sensor and cap have been extensively tested to withstand extreme environmental conditions.



Features

- ◆ Time-saving installation eliminates wiring errors.
- ◆ No tools required installing, removing, or replacing the sensor on the truck.
- ◆ IP69K Ingress Protection Rating—no ingress of dust and protection against close-range, high-pressure water spray down.
- ◆ Supports up to eight 2-wire compartment sensors enabling use in a wide portfolio of trailers.
- ◆ External cap levers dual axis assembly now enable vertical rotation for easy installation and removal in tight spaces.
- ◆ Corrosion-resistant aluminum alloy levers stand up to harsh environments on the top of tank trailers.



Scully Rack Tester

The Scully Rack Tester is a comprehensive, portable tester approved for hazardous locations. It allows you and Scully field personnel to quickly assess any Scully overfill prevention, earthing, and vehicle identification rack controller for proper equipment operation. In the event of a malfunction, it facilitates problem isolation and resolution.

Features

- ◆ Tests for proper performance of all Scully terminal overfill prevention control monitors.
- ◆ Ensures that your Loading Rack Control Monitors are functioning properly and will allow vehicles to load.
- ◆ Simulates Scully Optic and Thermistor Overfill Sensors, Scully Ground Bolts & Ground Balls, and Scully T.I.M.™ (Truck Identification Modules).

Scully Signal Company

Quality Control

Scully has been ISO 9001 certified since 1996 and meets all requirements of IEC 80079, which specifies requirements and information for establishing and maintaining a quality system to manufacture Ex equipment including protective systems in accordance with the Ex certificate.

As the go-to experts in safety systems for the fluid handling industry, Scully is committed to uncompromising quality, reliability, service, and operating efficiency with emphasis on human and environmental safety. Motivated by meeting or exceeding customers' expectations and intrinsic safety approval requirements for hazardous environments, Scully does not cut corners. Its fully integrated manufacturing facility ensures an effective, structured quality system that delivers exceptional product quality and customer experience.

In addition to its headquarters in Wilmington, MA, USA, Scully has its own direct sales and service offices in the U.K. and in Belgium for Europe and the Middle East. Representatives throughout the rest of the world service customers across many industries, such as: aviation, petroleum, chemical, fuel oil, military, marine, railroad, general transport, and tank truck. Scully products can be found keeping people and the environment safe in 80+ countries for private and state oil companies, airlines, refineries, petrochemical companies, food and beverage manufacturers, and more.

Unique features from Scully Signal Company

Only Scully Overfill Prevention Systems Offer:

- ◆ Dynacheck®, an automatic and continuous Dynamic Self-Checking® circuitry for fail-safe operation, every time. The system checks all components and its own operation 30 times per second to ensure maximum safety.
- ◆ A flawless record of loading operations, always protecting people and the environment.
- ◆ World-class customer care and sales support paired with 24/7 expert technical service.

Scully Grounding Systems offer:

- ◆ Self-proving design to establish a rack-to-truck bond to drain static charges from the vehicle. The system will shut down the loading operation automatically if the proper bond is not detected.
- ◆ Only one connection for both grounding and spill prevention is required, or a separate clamp connection for situations where only grounding is required.
- ◆ Scully Systems are certified by ATEX and are SIL2 Rated.



Dawcul is the exclusive authorised representative for Scully Signal Company across Eastern Europe. For more information please contact your local regional representative.



Your partner in energy since 1977