

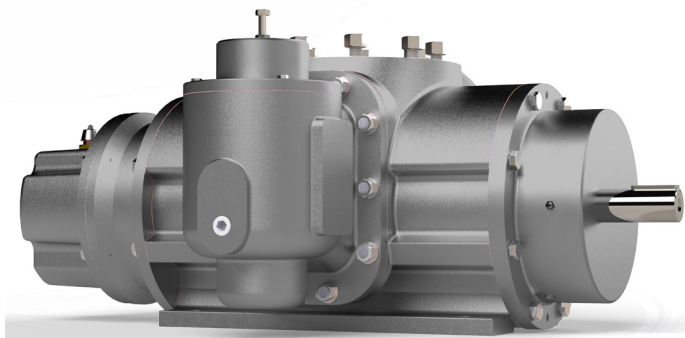


Albany Pumps is a leading manufacturer of standard and special purpose made-to-order pumps for a wide range of fluids. The company offers extensive knowledge of pump applications, providing advice on which type of pump is most suited to customers' needs.

Manufacturers of Rotary Gear Twin Screw and Lobe Pumps

Albany can meet the special needs of plant engineers, OEM's and users quickly and efficiently. A flexible engineering approach is backed by an exhaustive applications library of tried and tested solutions to most pumping problems in petrochemical, nuclear power, military, marine, lubrication and other fields.

Strict quality control is applied throughout manufacture and all pumps are tested to specification, many on computer-based test rigs. Albany is an approved supplier to many country's Navies, and complies with API codes for the petrochemical industries.



The company operates an approved Quality Assurance system to BS EN ISO 9001.

Albany owns the Stothert & Pitt screw pump designs and makes exact replacement pumps and spares in their UK factory along with a new range of standard twin-screw pumps.

Products

Rotary Gear Pumps

Ideal for precise transfer and metering applications involving liquids such as polymers, fuels, and chemical additives, it has a compact design and requires little maintenance.

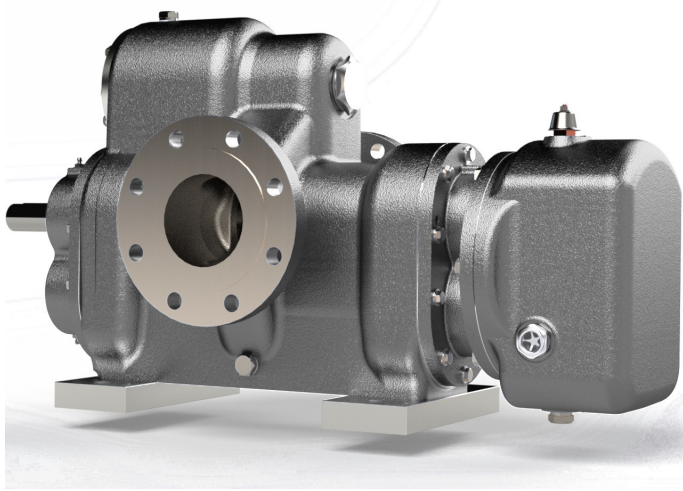
Performance:

- ◆ Starting at 5 litres per minute (L/min) our pumps can go up to 2000 L/min (120 m³/hr)
- ◆ Can hold liquids of temperatures up to 320 degrees celsius
- ◆ Pressures of up to 40 bar
- ◆ Viscosity of up to 250,000 cst
- ◆ Options for Spur, Single or Double Helical Gears

Available in foot & flange mounted bareshaft, bedplate mounted with various drive units and close-coupled compact versions, they can be supplied in different materials and some of the many options are thermal oil and electrical heating and incorporated relief valve.

Albany Pumps

Masters in Pumping Technology

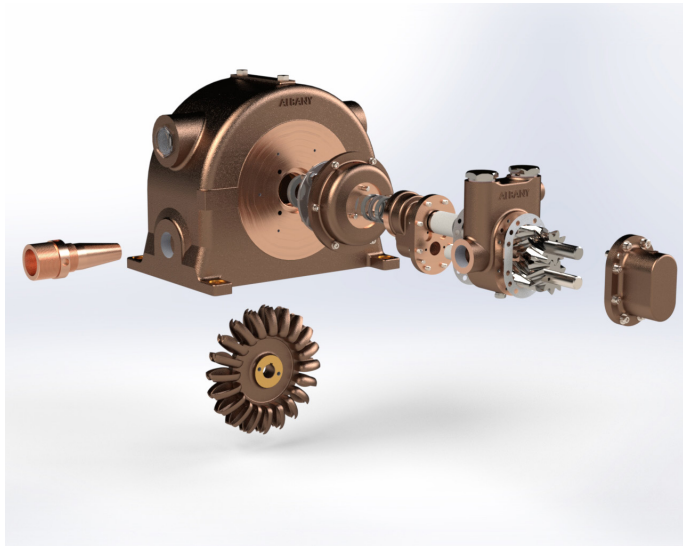


Twin-screw pumps

Now known as the 'S' range, Albany twin-screw pumps are popular in the oil and marine markets where they are capable of handling a wide range of viscosities that are often encountered with hydrocarbon liquids, and for their ability to operate efficiently at high temperatures.

Performance:

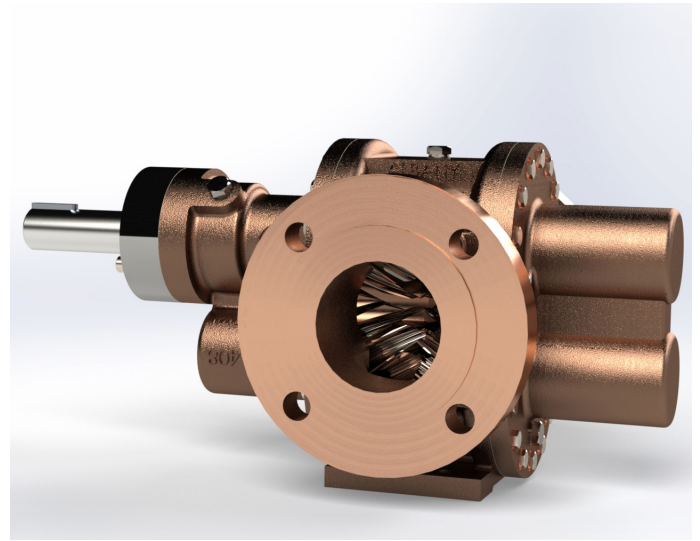
- ◆ Has a capacity of up to 1000m³/hr
- ◆ Pressures go up to generally 25 bar, some to 50 bar
- ◆ Temperatures to 300°C
- ◆ Viscosities to 60,000 cst.



Albany Screw Pumps

Albany screw pumps are fitted with hardened and ground timing gears and located bearings. This ensures there is no contact between the screws. The central discharge means the shafts are hydraulically balanced to eliminate any end thrust and the mechanical seals (or packed glands) are under inlet pressure. Integral relief valves are an option along with various heating methods.

All pumps are available to configure depending on the specific product being pumped or installation requirements.



Foam E-Style Pump

Albany is a market leader in the field of foam concentrate pumps and has created a sturdy range of GE fire/foam gear pumps. For the ultimate in safety, Albany offers pumps directly coupled to a Pelton (water) wheel, making it popular in offshore and refinery applications.

The range of foam concentrate gear pumps supply up to 2200 litres per minute of foam liquid at pressures up to 20 bar, with screw pumps available to supply up to 3000 litres per minute.

Gear pumps of sizes AP7, AP9 and HD5 can be supplied with VdS approval. Albany foam concentrate pumps can be supplied to comply to the latest edition of NFPA20 (2013).

Dawcul is an authorised distributor for Albany Pumps across Eastern Europe.

For more information please contact your local regional representative.