



MOGAS Industries is the dominant severe service technology company, providing world-renowned services and the best severe service, application-specific products for critical valve applications in power, mining, oil & gas, refining, chemical/petrochemical, pulp & paper and specialty industries. Severe service is defined as:

- **extreme temperatures**
- **high pressures**
- **abrasive particulates**
- **acidic products**
- **heavy solids build-up**
- **critical plant safety**
- **large pressure differentials**
- **velocity control**
- **noise control**

Our portfolio of products includes floating and trunnion severe service ball valve designs for quarter-turn isolation, with custom trim designs for flow control. Valve sizes range from 1/2 to 42 inch, and pressure classes up to ASME 4500.

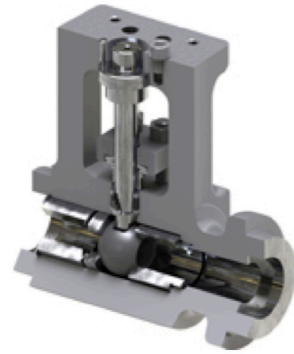
Known for partnering with its customers to meet the ever-increasing challenges of severe-service applications, MOGAS engineering services are available for project support, offering application-specific valve designs and pre-engineered valve systems. Complete product support include a totally customizable valve purchase and service plan.

Continuous years of research and development, design innovation, advanced manufacturing techniques and field experience allow us to offer an application-specific PERFORMANCE GUARANTEE on our isolation and control valves...plus a lifetime warranty on materials and workmanship.

MOGAS is a global company. You will find authorized sales and repair centers in China, Australia, Canada, North and South America, Africa, The Middle East and Europe that are staffed with MOGAS-trained technicians who provide the same high level of service, on-site assistance and engineering support found at our corporate service center in Houston.



RSVP (ASME 600-4500 LIMITED CLASS)

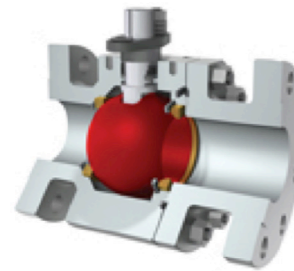


Through years of field experience, working with major power producers and a sophisticated performance analysis procedure, MOGAS has developed a product line dedicated to absolute isolation of critical equipment, dependable on/off operation for drains and vents, as well as longer

valve life for increased run-time.

MOGAS provides its advanced technology to the power industry with the RSVP designed to handle high-temperatures, high pressures, high-cycling and thermal shock.

ISOLATOR 2.0 (ASME 150-600 CLASS)



ISOLATOR 2.0 is a metal-seated, bi-directional floating ball valve for absolute isolation in specific mining, refining, chemical/petrochemical, power generation and pulp and paper industries. This ASME 150-600 Class valve

withstands temperatures up to 850° F, and its durable materials of construction and proven coatings reflect its lineage of a longer life cycle over time. It is currently available in 1 to 4 inches. Standard ends are raised face flange, socket weld and butt weld.

PORV (ASME 1500/2500/4500 CLASS)

High-Performance Valve Contributes to Plant Safety



The MOGAS PORV, a pneumatic-actuated pressure relieving valve, prevents excessive system pressure accumulation. The set pressure of the PORV is lower than that of the spring-loaded safety valve to prevent or reduce the number of lifts of the safety

valve, thus extending their life. The PORV is available either non-stamped or with the "V" stamp. The "V" stamped PORV has been flow certified by the National Board of Boiler and Pressure Vessel Inspectors.

The PORV operates as a system. The MOGAS ball valve is normally closed. The pressure switch senses steam pressure and closes an electrical switch when the pressure exceeds a predetermined point. This, in turn, energizes the solenoid valve, which pressurizes the "to open" cylinder port of the pneumatic actuator, opening the ball valve. When the pressure switch senses that the steam pressure has returned to normal, the electrical switch within the pressure switch opens, de-energizing the solenoid valve and closes the MOGAS ball valve.

C-SERIES (ASME 150-4500 CLASS)

Dependable Isolation.

The best choice in large bore isolation applications. MOGAS engineers have successfully designed the C-Series valve line which isolates under the extreme



conditions – high temperature up to 1652°F (900°C), high pressures up to 43,000 psig (2965 bar g), media build-up, cycling with solids in the line and erosive attack of materials and coatings. With more than 40 years of engineering expertise,

each C-Series valve is designed specifically for the application.

Each ball and seat subassembly is mate-lapped by hand and put through a rigorous testing procedure to ensure its integrity. The C-Series valve is available in full or reduced bore, ½ inch to 42 inches and in a wide variety of end connections.

T-SERIES (ASME 150-2500 CLASS*)

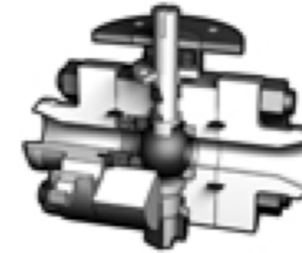


The MOGAS T-Series trunnion-mounted ball valve is available in both metal-seated (3 to 36 inch) and soft-seated (3 to 60 inch) two- or three-piece designs,

with operating temperature from -50° F to 400° F. The valve retains many of the time-tested features of the C-Series, such as an actuator mounting pad, but with a trunnion design. Its' reduced operating torque results in an overall less expensive valve and actuator package. (* Not all size / pressure class combinations available.)

SC-3PC (ASME 2500 CLASS)

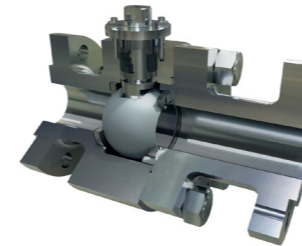
Flexibility of In-line Repair.



The SC-3PC has a three-piece body assembly with two proprietary body seals that allow the valve body to be easily removed while the end connections remain in line. The design also allows the valve body to be tested after repair, prior to insertion back in-line.

The SC-3PC is used in power plants for isolation of high pressure / high temperature applications.

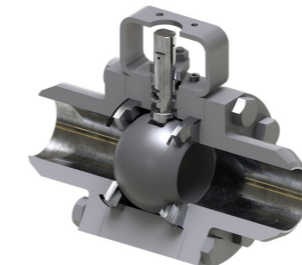
WATSON SERIES (ASME 150-600 CLASS)



MOGAS' Watson Series bi-directional, metal-seated isolation valve is widely used in mining industries. This ASME 150-600 Class valve is available in sizes from 1/2 to 12 inches, and in materials

of construction and coatings to specifically combat the harsh environment of corrosion and erosion, and high pressures and temperatures. Oxygen compliant in accordance with both end user mandate, as well as cleanroom industry standards.

G-SERIES (ASME 600 CLASS)



The G-Series valve is a general service, uni-directional ASME 600 Class full-bore valve for drain and vent applications with clean, low-pressure steam,

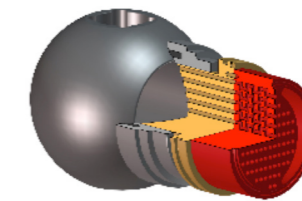


gas or liquid. The floating ball design with metal/graphite laminated seats lower torque and actuator requirements. Full bore protects sealing surfaces and meets TDP-1 2013 with no restrictions to flow. Sizes 1 to 3 inch (25 to 80 dn), and temperatures to 900° F (482° C). [Note: A105 limited to 800° F (426° C)].

MAX SERIES

MOGAS valve designs can be engineered to unique operational requirements. MOGAS MAX-Series valves involve strong collaboration between your engineering, operations and maintenance staff, along with MOGAS personnel. Site visits, technical discussions and/or specific testing are often required. These customized valves are special, one-of-a-kind solutions to satisfy your specific valve challenges. To learn more, contact a MOGAS representative today.

FLEXSTREAM® ROTARY CONTROL TECHNOLOGY



Designed around the highly reliable C-Series isolation valve, FlexStream rotary control technology offers the oil & gas markets significant advantages

of superior velocity control, variable characterization, exceptionally high rangeability and precision modulation for specific applications in your severe service environment.

There are two ball valve designs: floating and trunnion. The trunnion design can be manufactured in either soft-or metal-seated, depending on the application's temperature. Pressure classes range from 150 to 2500 depending on valve size, which are generally 3- to 60-inch (soft seated) and 3- to 36-inch (metal seated).



CLEANROOM SERVICES

MOGAS provides cleanroom services and precision cleaning for oxygen of critical parts to minimize non-volatile residue (NVR), to include aqueous, degrease and ultrasonic cleaning of valves (including emissions and pressure testing), piping, tubing, fittings, gauges, repair tooling, etc.

PERFORMANCE GUARANTEE

Due to continuous years of research and development, coating improvements, proven manufacturing techniques and application experience, MOGAS offers an unprecedented application-specific **PERFORMANCE GUARANTEE** on metal seated isolation and control valves. Years of continual valve performance analysis, field reports and statistical service data from around the globe provide the information required to guarantee our valves for a performance time period.

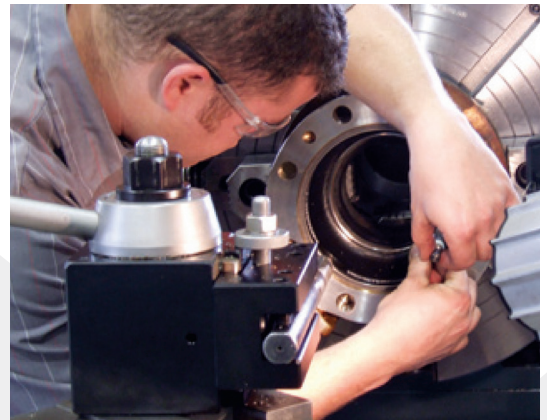
MOGAS valves come with a statistically driven, application-specific **PERFORMANCE GUARANTEE** ... plus a Lifetime Warranty on materials and workmanship.

Only from MOGAS.

MORE™ ASSET MANAGEMENT PLAN

Most customers want a total purchase and service plan that allows them to minimize their total cost of ownership, as well as truly benefit from predictive maintenance. Getting more value for every dollar is now more important than ever. MOGAS is pleased to introduce the MORE™ Asset Management Plan. This plan is customizable for each client to meet their specific needs.

- **Managed Inventories**
- **On-site Services**
- **Order Tracking**
- **Diagnostics**
- **Certified Training**
- **Walkdown Evaluations**
- **Valve Management Program (VMP) Online**



For additional information
feel free to contact us or visit:

www.dawcul.com

Dawcul Head Office
Number 8 Beech Court, Wokingham Road
Hurst, Reading, Berkshire RG10 0RQ
United Kingdom

T: +44 (0)118 932 0520
F: + 44 (0)118 924 1919
E: sales@dawcul.co.uk
W: www.dawcul.com