



Baker Hughes is a leading supplier and the OEM of Allen Gears and Lufkin Gears precision gearboxes for the global rotating machinery market. Baker Hughes provides OEM expertise to ensure the reliable supply and support of gearbox technology together with expert advice and world-class service.

Gearing technology

Baker Hughes offers unrivalled diagnostics and maintenance capabilities. This ensures that customers' gearboxes and associated machinery remain operational throughout the lifecycle of the plant.

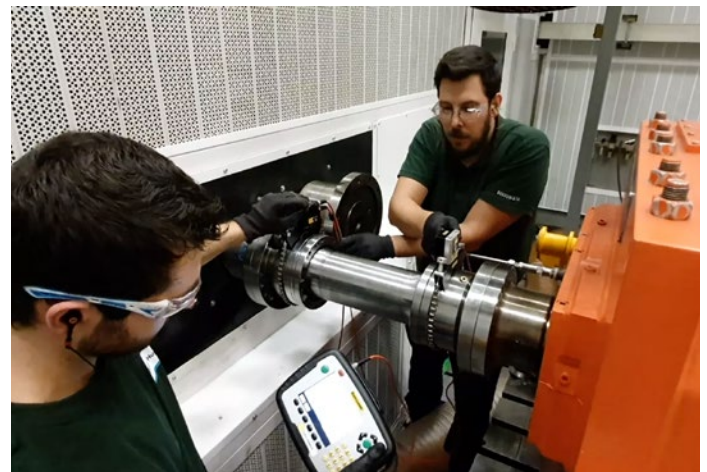
All work carried out adheres to rigorous Baker Hughes' quality standards no matter where or when the activities are performed. A highly skilled service team has the capability to conduct a comprehensive range of repairs and maintenance activities, lifetime extensions, as well as advanced upgrade solutions, all designed to meet specific customer needs.

Benefits

- ◆ Genuine OEM spare parts improve machine performance with technology injection, design enhancements and advanced materials
- ◆ Collaborative and innovative repair services both on and off site for industry-leading equipment availability and reliability
- ◆ OEM Field Service Engineers (FSEs) to execute or remotely supervise site activities with optimal quality, HSE, and efficiency
- ◆ Engineering expertise to upgrade and enhance older power transmission technologies to support evolving customer requirements

Features

- ◆ Identical or interchangeable parts delivered with maintenance recommendations tailored to the customers individual requirements



- ◆ Most advanced technology and repair solutions, with services designed to meet specific customer needs
- ◆ Diverse Field Service Engineers adapt to any customer needs and can execute or remotely supervise site activities with optimal quality, HSE and efficiency

Applications

- ◆ Genuine OEM spares for entire Lufkin Gears and Allen Gears fleet (~35,000 units worldwide) improving machine performance with technology injection, design enhancements and advanced materials
- ◆ Repair services performed by OEM with comprehensive resources at Centres of Excellence in France and USA
- ◆ Field Service Engineers perform installation, commissioning, alignment and inspections of Lufkin Gears, Allen Gears, and gears by other OEMs

Baker Hughes



Manufacturing

End-to-end solutions

- ◆ Customer collaboration from design to manufacturing
- ◆ High-speed and low-speed gearboxes
- ◆ Multistage epicyclic units for up to 32 MW
- ◆ Parallel shaft units for 100+ MW
- ◆ Combination parallel shaft and epicyclic units
- ◆ Couplings
- ◆ High-performance bearings
- ◆ Cradle gearboxes for test stands
- ◆ Multiple inputs or outputs
- ◆ Clutch integration
- ◆ Tilting pad journal bearings
- ◆ Sleeve and thrust bearings

Quality standards

- ◆ ISO 9001:2008
- ◆ ISO 14001:2004

High-speed design

- ◆ API 613 & 677
- ◆ AGMA 421/6011/6013
- ◆ ISO 6336
- ◆ DIN 3990

Country specifications

- ◆ ATEX/IECE x
- ◆ KOSHA
- ◆ PESO
- ◆ INMETROC
- ◆ CU-TR010/TR012

Service

Full-service capabilities

- ◆ Engineering
- ◆ Full testing
- ◆ Diagnostics and analytics
- ◆ Maintenance
- ◆ Parts
- ◆ Machining
- ◆ Repairs on and off site
- ◆ Field services
- ◆ Technical assistance
- ◆ On-site inspections
- ◆ Start-up assistance
- ◆ Training

In addition to servicing their own Lufkin, Allen Gears, and legacy GE industrial gear products, the company continues to provide the same high service level for other OEM units, including:

- | | |
|-------------------------|-----------------|
| ◆ Amarillo | ◆ Maag |
| ◆ BHS | ◆ Marley |
| ◆ Brad Foote | ◆ Philadelphia |
| ◆ Chicago Gear | ◆ Renk |
| ◆ D.O. James | ◆ Santasalo |
| ◆ David Brown | ◆ SEW Eurodrive |
| ◆ Delaval | ◆ Sumitomo |
| ◆ Falk | ◆ Terry |
| ◆ Farrel | ◆ Turbodyne |
| ◆ Flender/ Graffestaden | ◆ Voith |
| ◆ General Electric | ◆ WECO |
| ◆ Hansen | ◆ Westec |
| ◆ Hitach | ◆ Western |
| ◆ John Brown | ◆ Westinghouse |
| ◆ Link Belt | ◆ Worthington |

Dawcul is the exclusive authorised representative for Baker Hughes across Eastern Europe. For more information please contact your local regional representative.



Your partner in energy since 1977